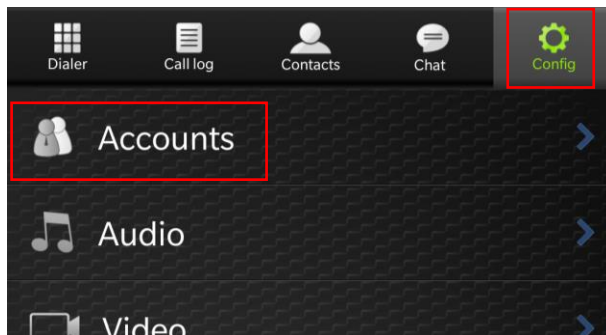


Configuring ISEPhone for Remote Access on Android

Download the App

<https://play.google.com/store/apps/details?id=com.zoiper.android.app>

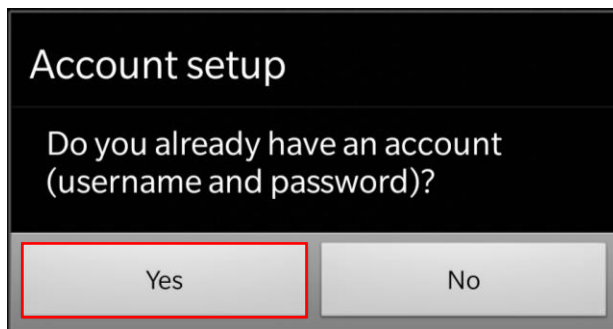
Add Account



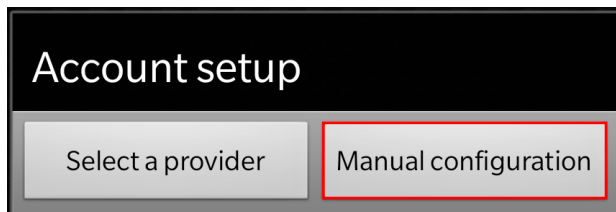
On the Config tab, select Accounts.



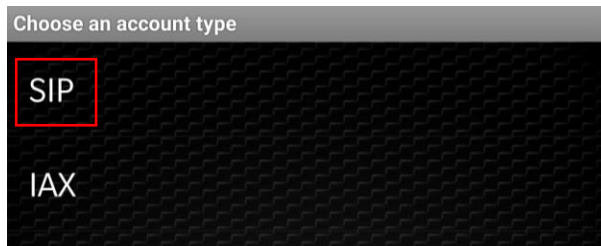
Select Add account.



Choose yes when asked if you already have an account.



Choose manual configuration.



Choose SIP.

Choose the settings as follows:

Account name	ISEPhone
Domain	isephone.iseage.org
Username	[PROVIDED]
Password	[PROVIDED]
Features -> DTMF style	Inband

Save the settings and go back to the Dialer.

Test the Account

To test outgoing calls, dial 7425. To be sure two-way audio and incoming calls work, dial white team at 232-9481, during our setup hours.

